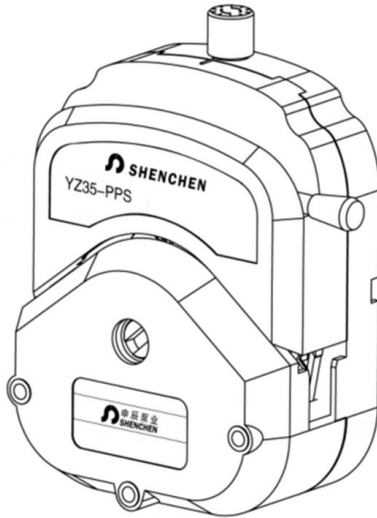


Shenchen Pump Head Manual of YZ35 Series



Baoding Shenchen Precision Pump Co.,Ltd.



Important Information

Please read the manual before operating the product.



Warning

- The crack of tubing because of wear results in the overflow of fluid from tubing. In that time human body and equipment may be hurted. Must check usually and change the tubing in time.
- If the pump head is accidentally in water , apply soft cloth and other absorbent soft cloth to wipe dry to prevent damage to the pump head
- The peristaltic pump should be carefully checked tubing if has damage before each start.
- Tubing use after a period of time, tubing can be 90 ° rotation; For single-tube tubing pump, it can also twitch the tubing to change the pressure point of the tubing and prolong the service life of the tubing.
- Loosen the tubing when not in use for a long time.

Catalogue

1. Product Introduction.....	1
2. Pump Head Instruction.....	2
3.Pump Head Installation Instruction.....	6
4. Pressure Regulation.....	8
5. Product Dimension.....	9
6. Maintenance.....	10
7. Warranty and After-sales Service	11

1. Product Introduction

Easy load pump head change the tubing easily and rapidly. Can connect pump heads together according to the usage, which is easily to match the OEM application.

YZ35 pump heads is made of PPS(polyphenylene sulfide material), has great rigidity and structural performance. Have super high temperature resistance and corrosion resistance. Especially in the anti organic solvents and other strong chemical corrosion performance. Effectively reduce the pump head damage rate, then reduce the customer's cost.

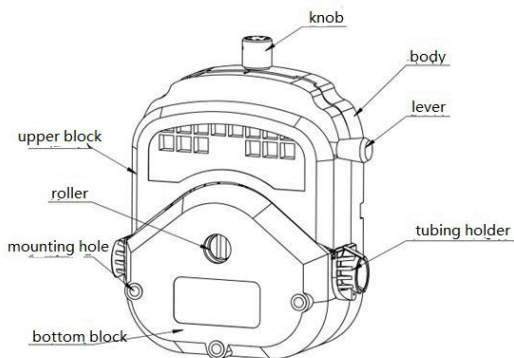
Technical Specification

Technical Specifications								
Pump Head	Tubing	ID×Wall Thickness(mm)	mL / r	Flow Rate(mL/min) (0.1-600rpm)	Tubing Max.Pressure(Mpa)		Material/Weight(kg)	
					Intermittent	Continuous	Aluminum Alloy	PPS
YZ35	26'	6.4×3.3	6.9	0.69~4200	0.27	0.20	4.36	1.50
	73'	9.6×3.3	12.3	1.23~7400				
	82'	12.7×3.3	20	2~12000	0.14	0.10		

Tubing Specification

Tubing Size		26'	73'	82'
Tubing cross sections (1:1)				
Wall thickness (mm)		3.3		
Inside diameter (mm)		6.4	9.6	12.7
Maximum pressure (Mpa)	Continuous	0.2		
	Intermittent	0.27		

2. Pump Head Instruction



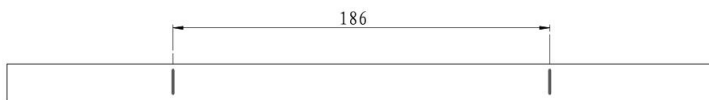
2.1 Tubing Holder Instruction

- ◇ Tubing holder function: fix the tubing, lower the tubing shaking during working, improve the stability and accuracy of flow rate; prevent the tubing wear, extend the tubing lifetime.
- ◇ Tubing holder model: 26#, 73#, 82#

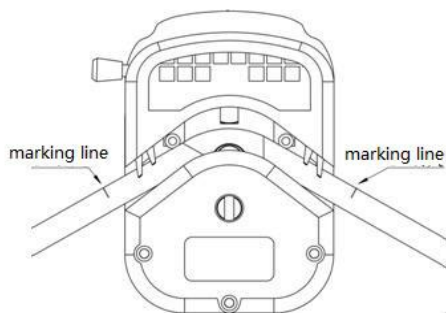


2.2 Tubing Installation

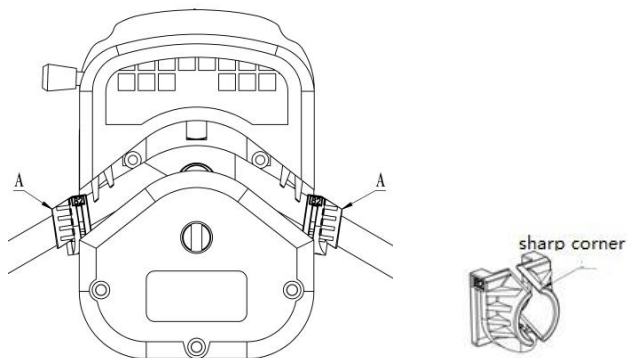
- Pull the lever anti clockwise 180 degrees, open the upper block.
- Drawing two marking lines in the tubing, distance is 186mm



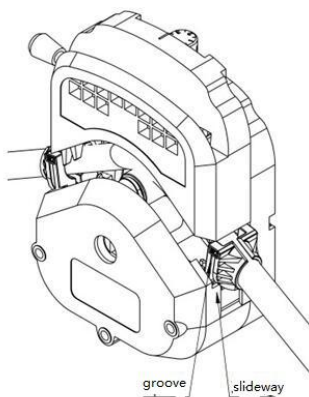
- Put the hose naturally between the roller and the upper block, keep the marking line upward.



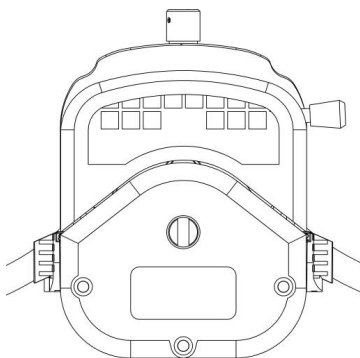
- Insert the holder into the tubing, keep the holder sharp corner align with the marking line. Keep the two tubing holders parallel with pump head.



- Put the groove of tubing holders into pump head slideway, press hard until can not be pressed, the tubing holders not install in place.



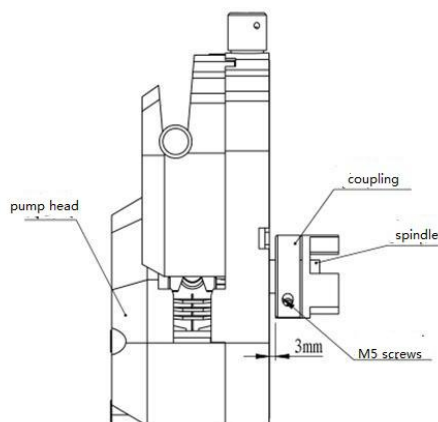
- Pull the lever clockwise,press slowly until upper block in place,then the tubing holders install in place.



3. Pump Head Installation Instruction

3.1 Single Pump Head

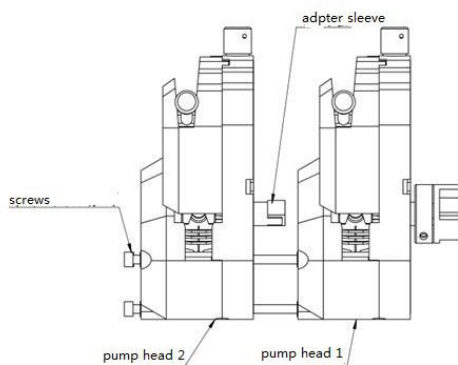
Firstly the coupling connected with the spindle of pump head,according to the graphic tight the screws,then put the pump head connect with the driver through the coupling.



3.2 Multichannel Pump Head

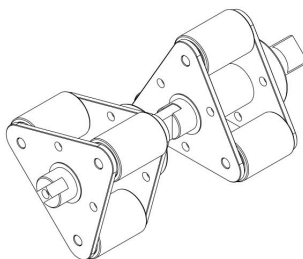
When multiple pump heads are connected in series, use longer screws.

Dual heads as an example, firstly the coupling connected with the spindle of pump head 1,tight screws M5,secondly put the spindle nose of pump head 2 into spindle groove of pump head 1. As shown below,connect the double heads with the drivers.

**Note:**

When install the pump heads, if the pump heads split seperately, the rollers should be staggered installed. As shown below photo.

Need to install adapter sleeve between the two pump heads' spindle, as shown above, otherwise pump head work unnormal.

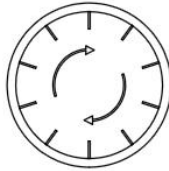


Note: Try to pinch the screws with balanced force, which should not be too tight. To prevent the under support transformed and generate noise.

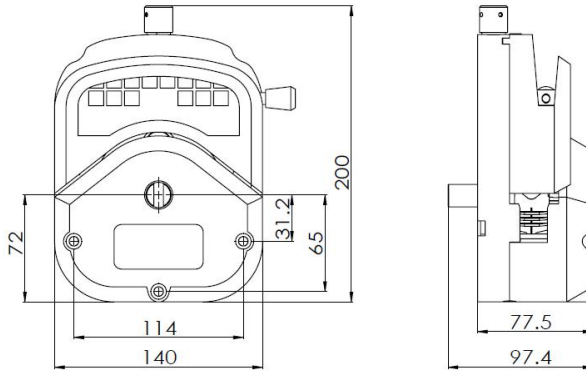
4. Pressure Regulation

YZ35 pump head can adjust the pressure by rotating the knobs.

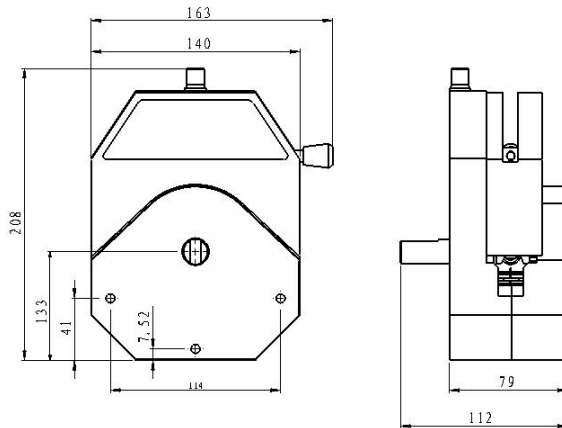
In the direction of the arrow, the pressure increases, and vice versa.



5. Dimension (Unit: mm)



YZ35-PPS pump head



YZ35 Aluminum Alloy

6. Maintenance

- When pump is not working, please loose the cartridges of pressing the tubing for avoiding changing the shape of tubing because of longtime extrusion.
- Keep the rollers of pump head clean and dry, otherwise it can quicken the tubing wearing, reduce the useful life of tubing and lead the rollers to damage in earlier.
- Pump head can not resist super corrosive liquid. Please pay attention to it when it is using

7. Warranty and After-sales Service

Products have one year warranty(not including tubing). In the warranty, the products are damaged because of users' wrong operation or other human damages, our company have not responsibility for warranty. Beyond the warranty, our company only receive the costs of maintenance.

MADE IN CHINA

Baoding Shenchen Precision Pump Co., Ltd.

Address: No.103, Building 2, Zhidian Industrial Park,

FuXing East Road 999, Baoding, China.

Tel: 86- 312- 6780680 6780681

Fax: 86-312- 6780636

Website: www.good-pump.com

Email: info@good-pump.com