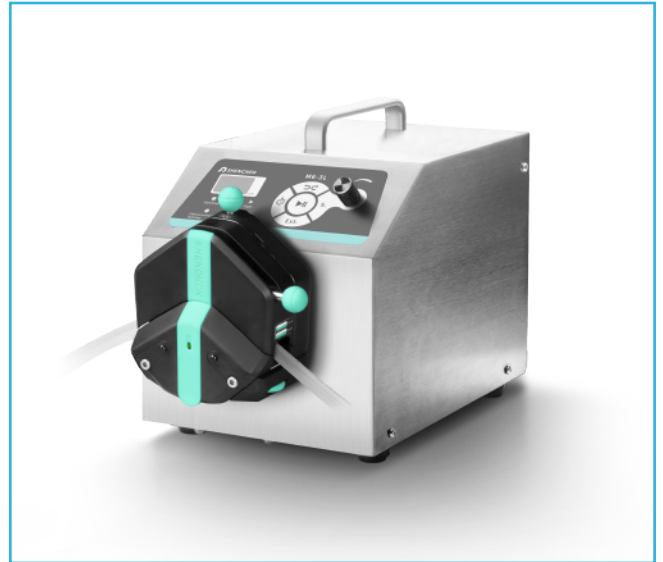
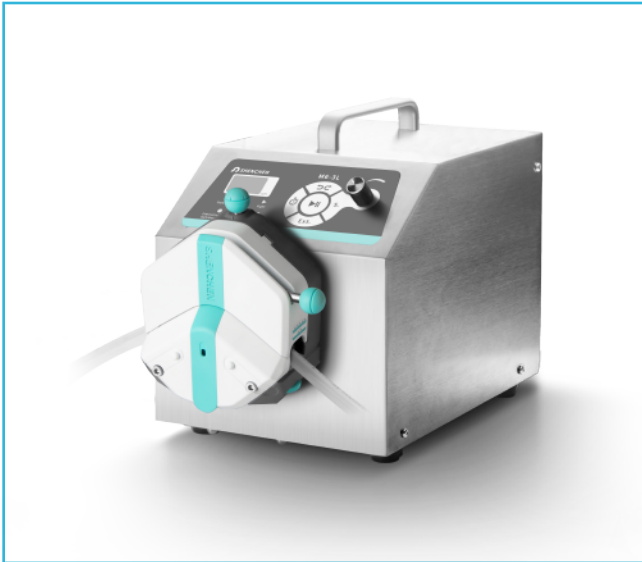




Flow Rate Peristaltic Pump

Model NO. : M6-3L/EasyPump

Flow Rate : 0.0053-3100mL/min



Product Features

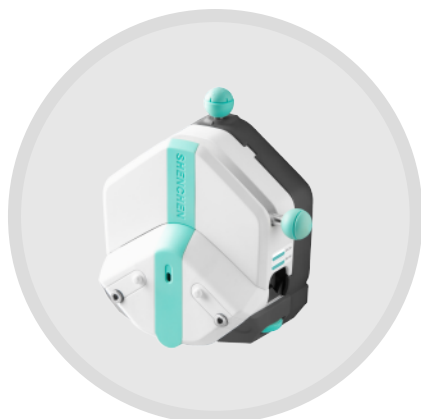
Closed-loop stepper motor drive, powerful and maintenance-free.

3 digital LED display motor speed, rotary encoded switch control.

Suitable for industrial sites, transfer liquid with large flow and high precision.



Pump Head



EasyPump Series(Pressure Adjustable)

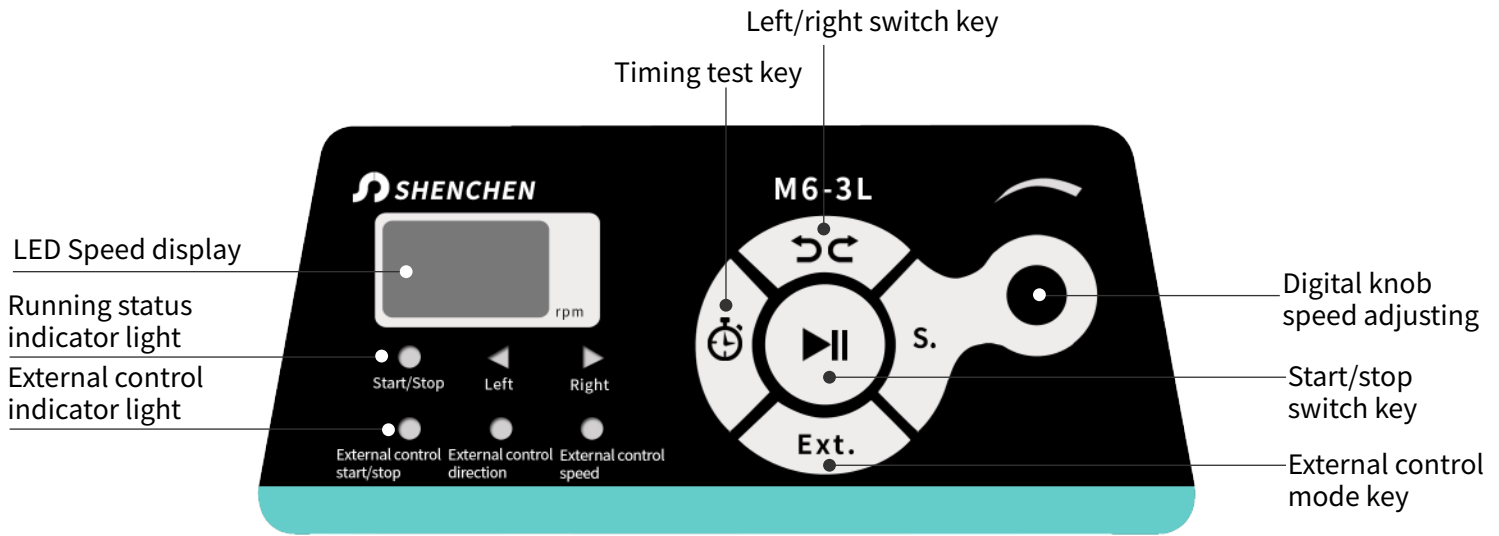


EasyPump Series(Fixed Pressure)

Pump Head	Tubing	ID×Wall thickness (mm)	mL/r	Flow Rate(mL/min) (0.1-600rpm)	Tubing Max.Pressure(Mpa)		Weight(Kg)
					Intermittent	Continuous	
Single Channel EasyPump I/III	13#	0.8×1.6	0.053	0.0053~32	0.27	0.17	0.6
	14#	1.6×1.6	0.27	0.027~162			
	19#	2.4×1.6	0.55	0.055~330			
	16#	3.1×1.6	0.933	0.0933~560	0.24	0.14	
	25#	4.8×1.6	1.967	0.1967~1180	0.14	0.10	
	17#	6.4×1.6	3.333	0.3333~2000	0.10	0.07	
	18#	7.9×1.6	4.3	0.430~2580	0.27	0.17	
Single Channel EasyPump II/IV	15#	4.8×2.4	1.8	0.180~1080			
	24#	6.4×2.4	2.733	0.2733~1640	0.24	0.14	
	35#	7.9×2.4	3.833	0.3833~2300			
Dual Channel EasyPump V/VI	36#	9.6×2.4	5.167	0.5167~3100	0.27	0.17	
	13#	0.8×1.6	0.053	0.0053~32			
	14#	1.6×1.6	0.27	0.027~162			
	19#	2.4×1.6	0.55	0.055~330	0.24	0.14	
	16#	3.1×1.6	0.933	0.0933~560			
25#	4.8×1.6	1.967	0.1967~1180				



Screen Display





Technical Specifications

Flow rate range	0.0053~3100 mL/min
Speed range	0.1-600 rpm
Flow rate accuracy	<±0.5%
Speed resolution	0.1rpm
Dispensing function	0.1s~9999h
Back suction angle	0-360°
Motor type	Closed-loop stepper motor
Control method	Mechanical keypad+Digital knob
Display	3.2" high definition LCD screen
Start/stop, direction signal	Passive switch signal, such as foot pedal switch; Active switch signal: 5V-24V
External speed control signal	0-5V,0-10V,4-20mA for option
Output interface	Output motor working status(Open-Collector output)
Power supply	AC 220V±10% 50Hz/60Hz (standard) AC 110V±10% 50Hz/60Hz (optional)
Communication interface	RS232, RS485 support MODBUS protocol(RTU mode)
Drive dimension	223×152×230mm(L×W×H)
Drive weight	5.06kg
Power consumption	<80W
Condition temperature	0-40°C
Relative humidity	<80%

Dimension Drawing(Unit: mm)

